

With best regards
Yrs. as usual
H. H. Cotton

21577



17, COLLINGHAM GARDENS,
SOUTH KENSINGTON,
S.W.

London

21 May 1896.

My dear General,

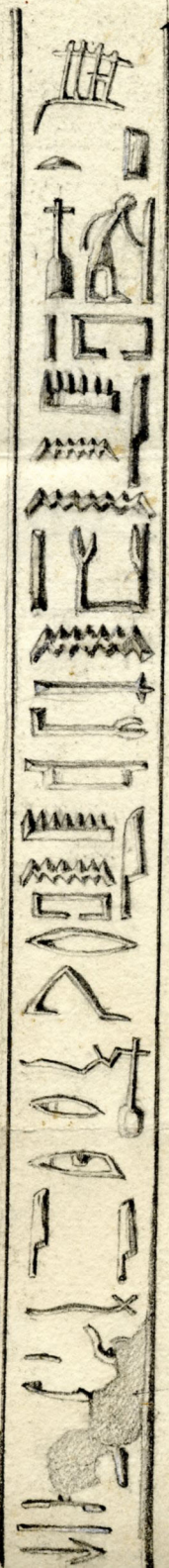
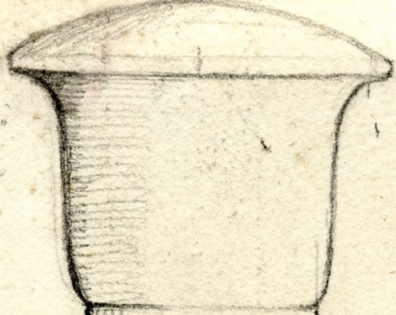
I enclose you herewith
the sketch of the Egyptian
Shaff, &c. I delayed giving
you an answer upon sooner
as I wished to consult
Dr. Budge thereon. The
following is the interpretation.
"Grant a venerable old age
in the Temple of Amen to the



Ka of the doorkeeper of
Amen; a happy exit
may be made for him
and a place of great
dignity;

We have had another
meeting today upon the
Ancient Monuments question,
it is not only Prehistoric
Monuments we wish to
have protected, but historical
likewise, such as castles

Cathedrals, Churches, Chapels
Corporations & Private buildg^s
of interest & certain Roman
remains. We have re-
quested the Foreign Office
to furnish us with details
of the systems adopted on
the Continent & the manner
in wh. it works - We have
had an acknowledgment by
the F.O. will give instructions
for the information to be
furnished to us.



Handwritten notes or symbols, possibly a list or key, located to the right of the main column of symbols.

Cement