

who got it with other coins
belonging to deceased brother.
It is so like some figured
in your valuable book, that it
must come from the same place,
the East, but I cannot give
you the exact reference, as I
have returned your book to
the Antiquaries.

Yours truly
R. S. Ferguson

FROM
R. S. FERGUSON, F.S.A.,
CHANCELLOR OF CARLISLE, & PRESIDENT
OF THE SOCIETY.

21382
Cumberland & Westmoreland
Antiquarian & Archaeological Society.

LOWTHER STREET,

Carlisle, Aug 17, 1895

Dear General Pitt-Rivers,
1) By Book Post I send
you the report of an excavation
on the Roman Wall last year; any
hints you can, if your great
experience, give us will be
much valued by Professor

Pelham, W Haverfield & my
other colleagues.

We now have trenches
open & opening at Bleatarn,
5 miles east of Cantule; at
A ppletree, near the great camp
of Bindowald; & at Lanescot.

2) I also enclose drawings
of two locks, which may
interest you.

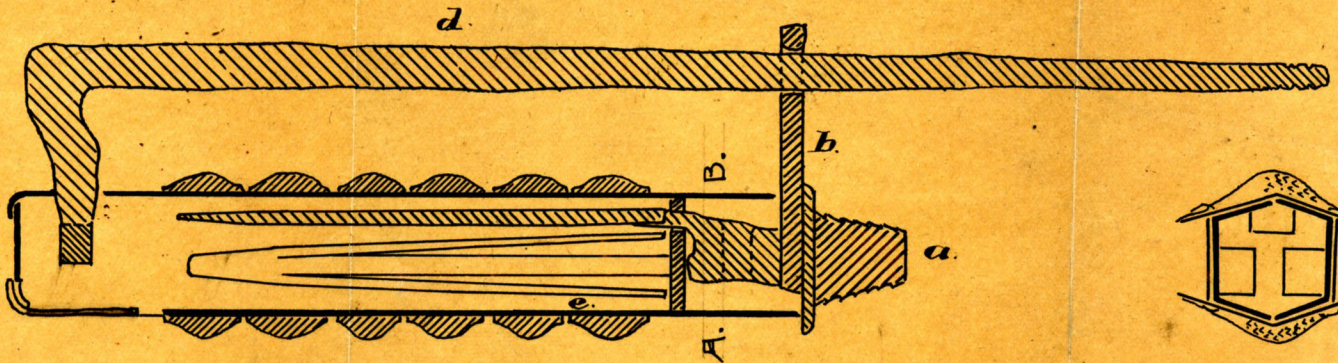
The one marked **A**. was given

^{given} to the ^{Museum,} Cantule, labelled an "Indian
rat trap": it had no key,
but I got one made, &
opened the lock. I have traced
it to Bombay.

The other, marked **B**,
was given to the Museum, &
called a "Portcullis Lock": its
key came with it. It was
purchased from a dealer at
Derby, who bought it from
a clergyman named Spain (?)

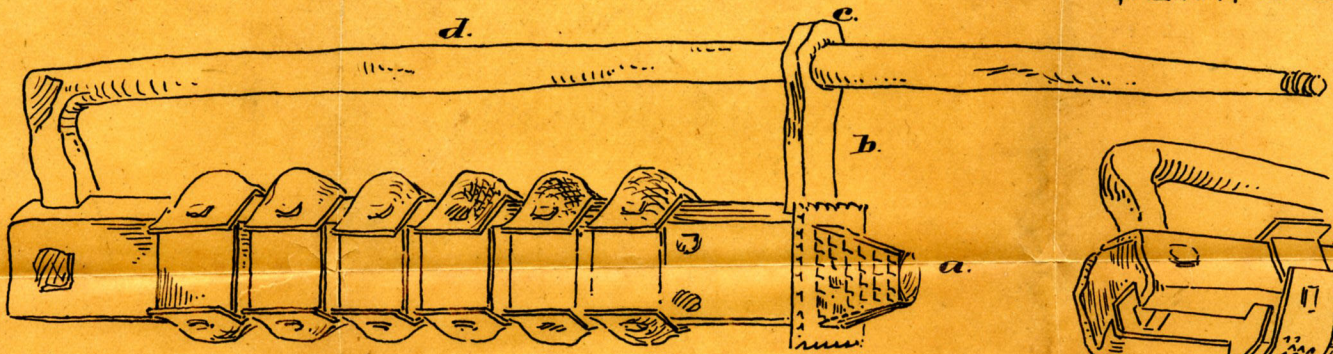
A

• PADLOCK •



• SECTION THROUGH BARREL SHOWING SPRING WHEN LOCKED •

• SECTION THROUGH BARREL AT A SHOWING CATCH FOR SPRING

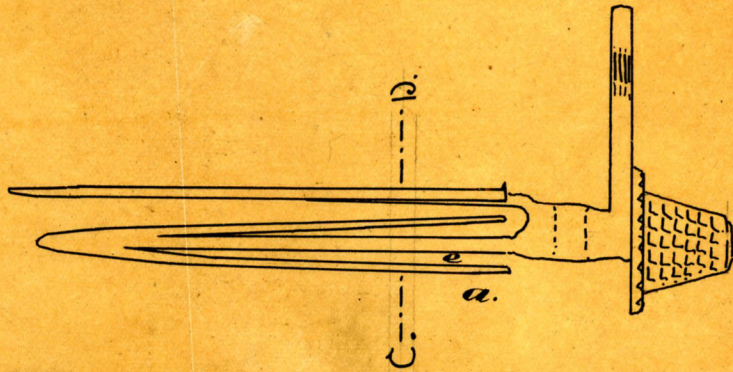


• GENERAL VIEW WHEN LOCKED •

• SKETCH OF HEEL OF BARREL SHOWING ACCESS FOR KEY •



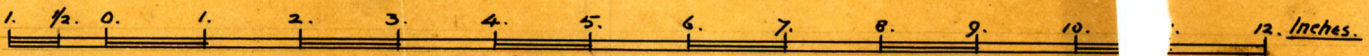
SECTION OF SPRING AT C-D



• SIDE VIEW OF SPRING WHEN DETACHED •



• PLAN OF SPRING AS SEEN FROM ABOVE •



Scale of inches.

Frank Johnson
June 25

4 W