

to put in 4 fingers with the end of the
sheath. The 2 parts consist of ivory M 25-

From a Franconian tomb in the
neighbourhood of Mainz

III blade of a Roman Franconian
spade of bronze M 25-

IV Ear ring, wherein a red Runic
bead of clay 5-

I shall be very pleased if one of the
objects interests you. You may choose
which ever you like

Awaiting the pleasure of hearing
from you I remain
Dear Sir

Your obedt. servant
Oscar Lehmann
grosse Bleiche

If you have a friend who is buying
antiquities you would much oblige
me by giving me his address.

Wainwa, 30th July 1888.

Dear Sir

M^r. Föhning, a friend of mine told me that he had the pleasure of receiving your visit last year and that he sold you some antiquities which were found on removal of the old Roman piers in the Rhine. He is now again in possession of some very interesting pieces and as he does not know English he has requested me to write you. I beg to enclose 2 sketches of the antiquities he has and of which the following is a description sketch leaf 1, figure I top of a standard with hook ending in a lance with forked points to which adheres a ^{frame} table of bronze. This frame formerly no doubt contained a wooden board on which the number of the legion or Cohort was marked. The lower part of the frame is provided with iron sheathing, such as it is to be seen on the tomb stone of a Roman soldier in the museum @ Vienna. As it appears the iron & bronze are united by a rod or little chain. Price £300. —

fig 2, fragment of a Roman sword (Gladius), the fragment of the hilt consists

of ivory. The upper part of the sheath is of gilded silver and the rest of the blade of iron

Price \$60-

Figure 3.) Foot of a precious ivory chair most probably of a cirque splendidly polished. \$60-

Sketch leaf 2.) Gothic sword with silver engravings on both sides of the blade. \$200-

6 Norman axes of different forms & sizes each \$10- \$60-

No. I a Norman lance . 12-

2 an old pistol barrel graver. 12-

He is also in possession of the following (from the old Roman pieces)

No. II

6 beautiful Roman axes \$90-

6 " " " @ \$10 = 60-

8 different chisels }
4 @ \$6. - } . 36-
4 @ . 3. - }

7.) hook of a ship . 12-

8.) an oblong lance (iron) . 12-

9.) a hollow " very light . 12-

10.) a curved knife " 6-

11.) a little instrument a sort of
axe (axe & handle of one piece
of iron) . 15-

12.) 2 Roman locks, round
cylinders @ \$10- . 20-

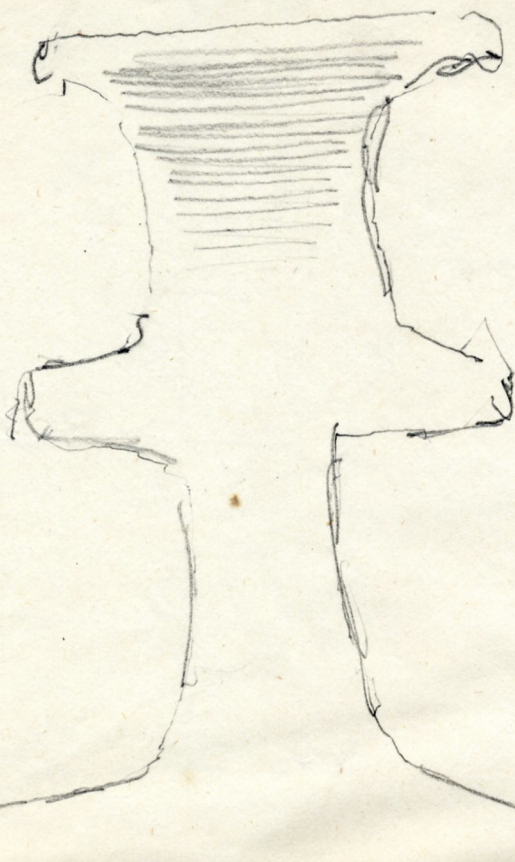
- 13) head of a Roman Centurio stick £ 12 —
 14) fishing-hook of bronze for pikes
 with a lead ball and a bronze chain " 15. —
 16) a bell of bronze somewhat large " 12 —
 17) a ^{small} ~~little~~ lion's head of bronze " 12 —
 18) " small Merovingian scabbard " 10 —
 19) 3 tools in the form of axes made of iron. 24 —
 20) 2 Roman sandals " £ 150. — " 300 —

He has also for sale the following objects
 found in the Rhine

- a) a beautiful (probably Spanish) Rapier
 with a long blade of the work of 30 years
 with a very fine hilt of cut iron £ 120 —
 b) an extraordinary axe in size
 of iron with a hilt of wood " 20 —
 c) a small iron blade with a cross
 stake " 20 —

From the Roman castle @ Mainz
 he has

- I) a small Roman bronze handle
 stick for papers on which the following
 words are engraved COR, COMITA
 DIVL NOBITIS. The handle stick
 represents a small vase with a
 long stem ^{the hilt} £ 60 —
 II the middle part of a Roman
 sword (Gladius) with furrows



Aus dem Rhein
beim ausheben der Pfeiler
der Römischen Brücke von Mainz.

(6 Stück verschieden im Form
& Größe.
& zweier verschieden in Form
& Größe)



Spitze des Kohortensiegels
an welchem die Tafel
schon erhalten (Lisen)

hat wahrscheinlich eine Holztafel
aufgenommen welche die Zahl
der Legion oder Kohorte trug.

(Bronze.)

Bronzeanhänger

zu Figur No. 1
gehörend.

Bronzebalancier
zu Figur No. 2



12

Kritze 1.
No 1.2.3 Aus dem Rhein
beim ausheben der Pfeiler der Römischen Bänke von Mainz

Stuhl aus eisern
Römischen Stuhls
von Ebenholz (Kirschholz)
Foot of a chair
Figure No. 3
Ivory

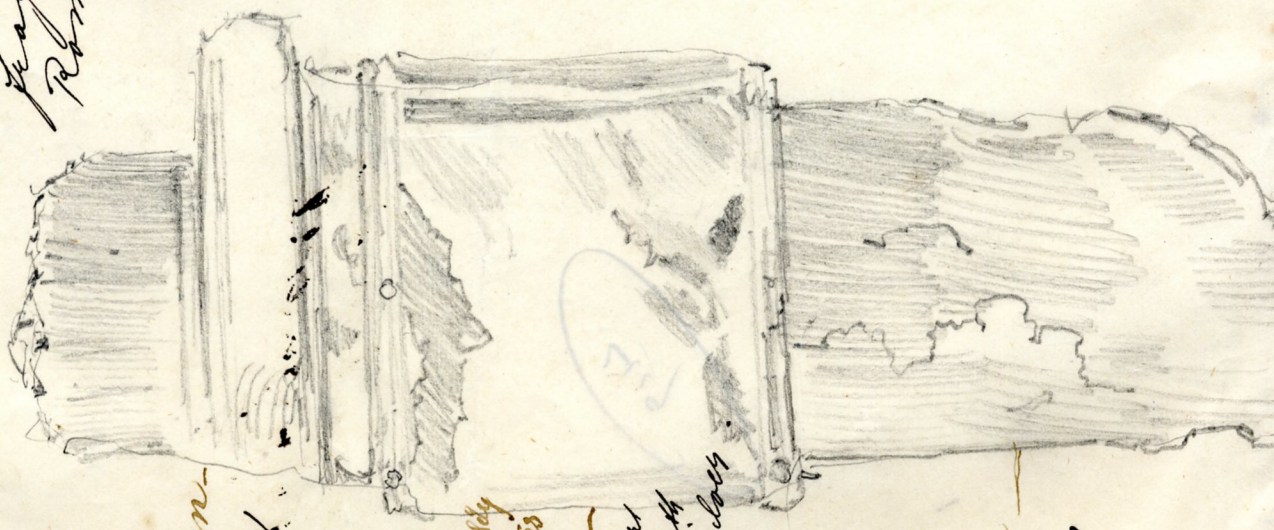


Ebenholz
Ivory

Figure No. 1.

Bruchstück eines Römischen Schwertes
Fragment of a
Roman sword

Figure No. 2.
(Gladius.)



Ebenholz
Ivory

Lores
neidamberdly
ergalbetes
Silber
upper part
of the sheath
golden boss

Eisen
Iron

right over